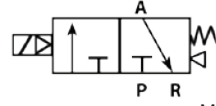


## BCS Bobin-Yay Valfler / Single Solenoid Valves



Bluetech  
Model Model

S : Özel Gövde / Special Body  
M : Maxi / Maxi  
N : Namur / Namur  
NC : Normalde Kapalı / Normally Closed  
NO : Normalde Açık / Normally Open

Diş Ölçüsü / Port Size

18 : 1/8"  
14 : 1/4"  
12 : 1/2"

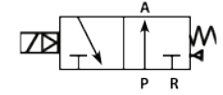
32 : 3 Yol 2 Konumlu 3 port 2 position  
52 : 5 Yol 2 Konumlu 5 port 2 position

Model Model	BCS 3218	BCS-NC 3214	BCS-NO 3214	BCS 5218	BCS 5214	BCSS 5214	BCSN 5214	BCSM 5214	BCS 5212
Delik Ölçüsü / Port Size	in:1/8" out:1/8" exhaust: 1/8"	in:1/4" out:1/4" exhaust:1/4"	in:1/4" out:1/4" exhaust:1/4"	in:1/8" out:1/8" exhaust: 1/8"	in:1/4" out:1/4" exhaust:1/8"	in:1/4" out:1/4" exhaust:1/8"	in:1/4" out:1/4" exhaust:1/4"	in:1/2" out:1/2" exhaust: 1/2"	
Valf Tipi / Valve Type	3 yol 2 konumlu 3 port 2 position			5 yol 2 konumlu 5 port 2 position					
Çal. Şekli / Operating Type	İçten Pilotlu ve yaylı / Internally Piloted and with spring								
Akışkan / Fluid	40 µ Filtreli Hava 40 µ Filtered Air								
Orifis Çapı / Orifice Size	14 mm <sup>2</sup> Cv = 0,76	16 mm <sup>2</sup> Cv = 0,89		14 mm <sup>2</sup> Cv = 0,76	16 mm <sup>2</sup> Cv = 0,89	25 mm <sup>2</sup> Cv = 1,4		50 mm <sup>2</sup> Cv = 2,79	
Sic. (°C) / Temperature	- 0~50								
Çalışma Basıncı (bar) / Operating Pressure	1,5-8			2-10					
Min. Aktifleşme Zamanı / Min. Activating Time	0,05 s								
Max. Çalışma Frekansı / Max. Frequency	5 çevrim /sn, 5 cycle / s								
Standard Voltaj / Standard Voltage	24v AC 24v DC 220v AC	12v AC 24v AC 110v AC	12v DC 24v DC 220v AC	24v AC 24v DC 220v AC	12v AC 24v AC 110v AC		12v DC 24v DC 220v AC		
Güç Tüketimi / Power Consumption	AC: 5,5 VA / DC: 4,8W								
Insulation & Protection Class	F Class / IP65								

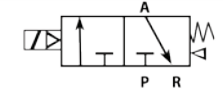
### 5/2 BOBİN-YAY / Single Solenoid



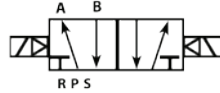
### 3/2 BOBİN-YAY-NO / Single Solenoid-NO



### 3/2 BOBİN-YAY-NC / Single Solenoid-NC



## BCC Bobin-Bobin Valfler / Double Solenoid Valves



Bluetech  
Model Model

S : Özel Gövde / Special Body  
M : Maxi / Maxi  
N : Namur / Namur  
C : Kapalı Merkez / Closed Center  
O : Açık Merkez / Opened Center  
CM : Kapalı Merkez / Maxi Closed Center Maxi

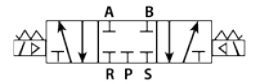
Diş Ölçüsü / Port Size

18 : 1/8"  
14 : 1/4"  
12 : 1/2"

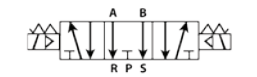
52 : 5 Yol 2 Konumlu 5 port 2 position  
53 : 5 Yol 3 Konumlu 5 port 3 position

Model Model	BCC 5218	BCC 5214	BCCM 5214	BCCN 5214	BCCS 5214	BCC 5212	BCCO 5314	BCCM 5314	BCCN 5314	BCCS 5312
Delik Ölçüsü / Port Size	in:1/8" out:1/8" exhaust: 1/8"	in:1/4" out:1/4" exhaust:1/8"	in:1/4" out:1/4" exhaust:1/4"	in:1/4" out:1/4" exhaust:1/8"	in:1/4" out:1/4" exhaust:1/8"	in:1/2" out:1/2" exhaust: 1/2"	in:1/4" out:1/4" exhaust:1/8"	in:1/4" out:1/4" exhaust:1/4"	in:1/2" out:1/2" exhaust: 1/2"	
Valf Tipi / Valve Type	5 yol 2 konumlu 5 port 2 position				5 yol 3 konumlu 5 port 3 position					
Çal. Şekli / Operating Type	İçten Pilotlu-yaylı Internally / Piloted and with spring									
Akışkan / Fluid	40 µ Filtreli Hava / 40 µ Filtered Air									
Orifis Çapı / Orifice Size	14 mm <sup>2</sup> Cv = 0,76	16 mm <sup>2</sup> Cv = 0,89			50 mm <sup>2</sup> Cv = 2,79	12 mm <sup>2</sup> Cv = 0,67		30 mm <sup>2</sup> Cv = 1,67		
Sic. (°C) / Temperature	0~60									
Çalışma Basıncı (bar) / Operating Pressure	1,5-8	2-10	1,5-8	2-10	1,5-8	2-10				
Min. Aktifleşme Zamanı / Min. Activating Time	0,05 s									
Max. Çalışma Frekansı / Max. Frequency	5 çevrim /sn, 5 cycle / s					3 çevrim /sn, 3 cycle / s				
Standard Voltaj / Standard Voltage	24v AC 24v DC 220v AC	12v AC, 12v DC, 24v AC, 24v DC, 110v AC, 220v AC								
Güç Tüketimi / Power Consumption	AC: 5,5 VA / DC: 4,8W									
Insulation & Protection Class	F Class / IP65									

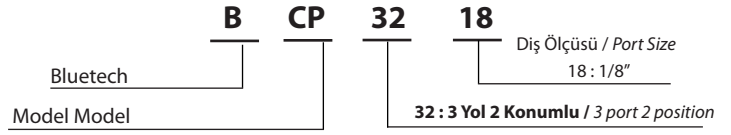
### 5/3 Kapalı Merkez / Closed Center



### 5/3 Açık Merkez / Open Center

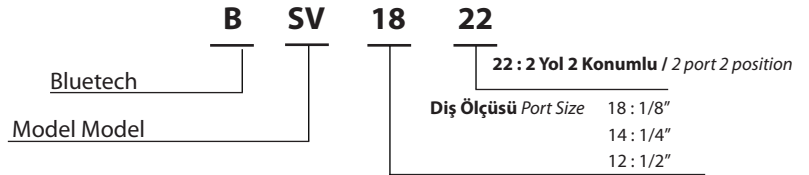
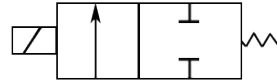


## BCP Bobinli Pilot Valfler / Air Solenoid Valves



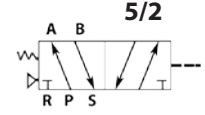
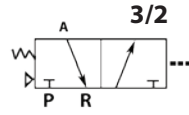
Model Model	BCP 3218
Delik Ölçüsü Port Size	1/8"
Valf Tipi Valve Type	3 yol 2 konumlu 3 port 2 position
Çal.Şekli Operating Type	Direkt Çekmeli Tip Direct Drive Type
Akışkan Fluid	40 µ Filtreli Hava 40 µ Filtered Air
Sıcaklık (°C) Temperature	-10 ~ 60
Çalış. Bas. (bar) Operating Press.	0 ~ 8
Min.Aktifleşme Zamanı / Min. Activating Time	0,05 s
Max. Çalışma Frekansı / Max. Frequence	10 çevrim /sn, 10 cycle / s
Standard Voltaj / Standard Voltage	12v AC, 12v DC, 24v AC, 24v DC, 110v AC, 220v AC

## BSV Genel Maksatlı Selenoid Valfler / Solenoid Valves



Model Model	BSV 1822	BSV 1422	BSV 1222
Delik Ölçüsü Port Size	1/8"	1/4"	1/2"
Valf Tipi Valve Type	2 yol 2 konumlu 2 port 2 Position		
Çal.Şekli Operating Type	Diyafıramlı Guide Type		
Akışkan Fluid	Hava, Su, Yağ Air, Water, Oil		
Sıcaklık (°C) Temperature	-10~80		
Çalış. Bas. (bar) Operating Press.	0,5 ~ 7		
Max. Çalışma Frekansı / Max. Frequence	10 çevrim /sn, 10 cycle / s		
Standard Voltaj / Standard Voltage	24v DC, 220v AC		

## BAS Pilot-Yay Valfler / Single Pneumatically Operated Valves



Bluetech  
Model Model  
M : Maxi / Maxi

**B AS** --- **52 18**

Diş Ölçüsü / Port Size  
18 : 1/8"  
14 : 1/4"  
12 : 1/2"

**32 : 3 Yol 2 Konumlu / 3 port 2 position**  
**52 : 5 Yol 2 Konumlu / 5 port 2 position**

Model Model	BAS 3218	BAS 3214	BAS 5218	BAS 5214	BASM 5214	BAS 5212
<b>Delik Ölçüsü / Port Size</b>	in:1/8" out:1/8" exhaust:1/8"	in:1/4" out:1/4" exhaust:1/4"	in:1/8" out:1/8" exhaust:1/8"	in:1/4" out:1/4" exhaust:1/8"	in:1/4" out:1/4" exhaust:1/4"	in:1/2" out:1/2" ex- haust: 1/2"
<b>Valf Tipi / Valve Type</b>	3 yol 2 konumlu 3 port 2 position			5 yol 2 konumlu 5 port 2 position		
<b>Çal. Şekli / Operating Type</b>	İçten Pilotlu / Internally Piloted					
<b>Akışkan / Fluid</b>	40 µ Filtreli Hava / 40 µ Filtered Air					
<b>Orifis Çapı / Orifice Size</b>	12 mm <sup>2</sup> CV=0,56	16 mm <sup>2</sup> Cv = 0,89	14 mm <sup>2</sup> Cv = 0,76	16 mm <sup>2</sup> Cv = 0,89	25 mm <sup>2</sup> Cv = 1,4	50 mm <sup>2</sup> Cv = 2,79
<b>Sic. (°C) / Temperature</b>	5 ~ 50					
<b>Çalışma Basıncı (bar) / Operating Pressure</b>	1,5-8					
<b>Min.Aktifleşme Zamanı / Min. Activating Time</b>	0,05 s					
<b>Max. Çalışma Frekansı / Max. Frequency</b>	5 çevrim /sn, 5 cycle / s					

## BAA Pilot-Pilot Valfler / Double Pneumatically Operated Valves



Bluetech  
Model Model

**B AA** --- **52 18**

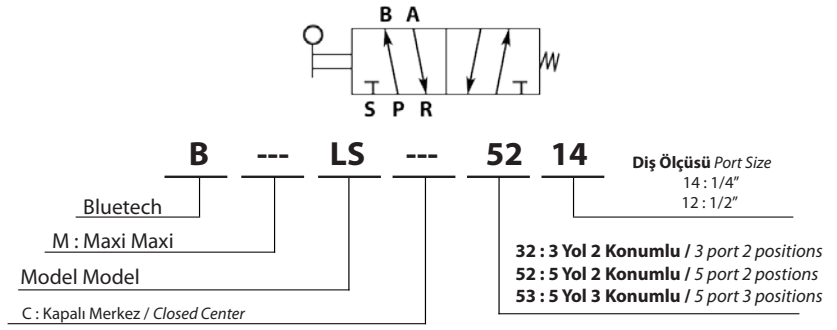
Diş Ölçüsü / Port Size  
18 : 1/8"  
14 : 1/4"  
12 : 1/2"

**32 : 3 Yol 2 Konumlu / 3 port 2 position**  
**52 : 5 Yol 2 Konumlu / 5 port 2 position**  
**53 : 5 Yol 3 Konumlu / 5 port 3 position**

M : Maxi / Maxi  
C : Kapalı Merkez / Closed Center  
O : Açık Merkez / Opened Center  
CM : Kapalı Merkez / Maxi Closed Merkez Maxi

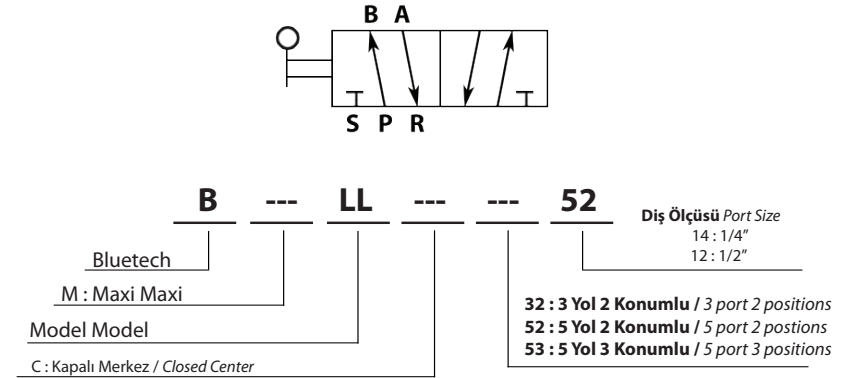
Model Model	BAA 3214	BAA 5218	BAA 5214	BAAM 5214	BAA 5212	BAAC 5314	BAAO 5314	BAACM 5314
<b>Delik Ölçüsü / Port Size</b>	in:1/4" out:1/4" exhaust:1/4"	in:1/8" out:1/8" exhaust: 1/8"	in:1/4" out:1/4" exhaust:1/8"		in:1/2" out:1/2" exhaust: 1/2"	in:1/4" out:1/4" exhaust:1/8"		in:1/4" out:1/4" exhaust:1/4"
<b>Valf Tipi / Valve Type</b>	3 Yol 2 Kon- umlu 3port 2position		5 Yol 2 Konumlu 5 port 2 position			5 Yol 3 Konumlu 5 port 3 position		
<b>Çal. Şekli / Operating Type</b>	İçten Pilotlu / Internally Piloted							
<b>Akışkan / Fluid</b>	40 µ Filtreli Hava / 40 µ Filtered Air							
<b>Orifis Çapı / Orifice Size</b>	14 mm <sup>2</sup> CV=0,78	14 mm <sup>2</sup> Cv = 0,78	16 mm <sup>2</sup> Cv = 0,89	25 mm <sup>2</sup> Cv = 1,40	50 mm <sup>2</sup> Cv = 2,79	12 mm <sup>2</sup> Cv = 0,50		18 mm <sup>2</sup> Cv = 1,00
<b>Sic. (°C) / Temperature</b>	5 ~ 50							
<b>Çalışma Basıncı (bar) / Operating Pressure</b>	1,5 - 8							
<b>Min.Aktifleşme Zamanı / Min. Activating Time</b>	0,05 s							
<b>Max. Çalışma Frekansı / Max. Frequency</b>	5 çevrim /sn, 5 cycle / s							

## BLS Kol-Yay Valf / Lever Monostable Valves



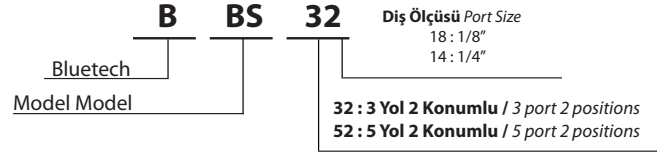
Model Model	BLS 3214	BMLS 3214	BLS 5214	BMLS 5214	BLSC 5314	BLSC 5312	BMLSC 5314
Delik Ölçüsü / Port Size	in:1/4" out:1/4" exhaust:1/4"		in:1/4" out:1/4" exhaust:1/8"	in:1/4" out:1/4" exhaust:1/4"	in:1/4" out:1/4" exhaust:1/8"	in:1/2" out:1/2" exhaust:1/2"	in:1/4" out:1/4" exhaust:1/4"
Valf Tipi / Valve Type	3 yol 2 konumlu 3 port 2 position		5 yol 2 konumlu 5 port 2 position		5 yol 3 konumlu 5 port 3 position		
Akışkan / Fluid	40 µ Filtreli Hava / 40 µ Filtered Air						
Orifis Çapı / Orifice Size	18 mm <sup>2</sup> CV=1,00			25mm <sup>2</sup> CV=1,40	12 mm <sup>2</sup> CV=0,67	30 mm <sup>2</sup> CV=1,68	18 mm <sup>2</sup> CV=1,00
Sıcaklık (°C) Temperature	0 ~ 60						
Çalış. Bas. (bar) Operating Press.	0-8						

## BLL Kol-Kol Valf / Lever Bistable Valves



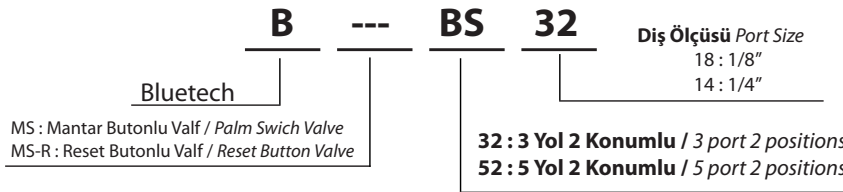
Model Model	BLL 3214	BMLL 3214	BLL 5214	BLL 5212	BMLL 5214	BLLC 5314	BLLC 5312	BMLLC 5314
Delik Ölçüsü / Port Size	in:1/4" out:1/4" exhaust:1/4"		in:1/4" out:1/4" exhaust:1/8"	in:1/2" out:1/2" exhaust:1/2"	in:1/4" out:1/4" exhaust:1/4"	in:1/4" out:1/4" exhaust:1/8"	in:1/2" out:1/2" exhaust:1/2"	in:1/4" out:1/4" exhaust:1/4"
Valf Tipi / Valve Type	3 yol 2 konumlu 3 port 2 position		5 yol 2 konumlu 5 port 2 position		5 yol 3 konumlu 5 port 3 position			
Akışkan / Fluid	40 µ Filtreli Hava / 40 µ Filtered Air							
Orifis Çapı / Orifice Size	18 mm <sup>2</sup> CV=1,00			50 mm <sup>2</sup> CV=2,79	25mm <sup>2</sup> CV=1,40	12 mm <sup>2</sup> CV=0,67	30 mm <sup>2</sup> CV=1,68	18 mm <sup>2</sup> CV=1,00
Sıcaklık (°C) Temperature	0 ~ 60							
Çalış. Bas. (bar) Operating Press.	0-8							

## BBS Buton-Yay Valfler / Push Button Operated Valves



Model Model	BBS 3218	BBS 3214	BBS 5214
Delik Ölçüsü / Port Size	in:1/8" out:1/8" exhaust: 1/8"	in:1/4" out:1/4" exhaust:1/4"	in:1/4" out:1/4" exhaust:1/8"
Valf Tipi / Valve Type	3 Yol 2 Konumlu 3 port 2 position		5 Yol 2 Pozisyon 5 port 2 position
Akışkan / Fluid	40 µ Filtreli Hava / 40 µ Filtered Air		
Orifis Çapı / Orifice Size	12 mm <sup>2</sup> CV=0,67	16 mm <sup>2</sup> CV=0,89	16 mm <sup>2</sup> CV=0,89
Sıcaklık (°C) Temperature	0 ~ 60		
Çalış. Bas. (bar) Operating Press.	0-8		

## BMS Mantar Butonlu Valfler / Palm Switch Valves Mushroom Push Button

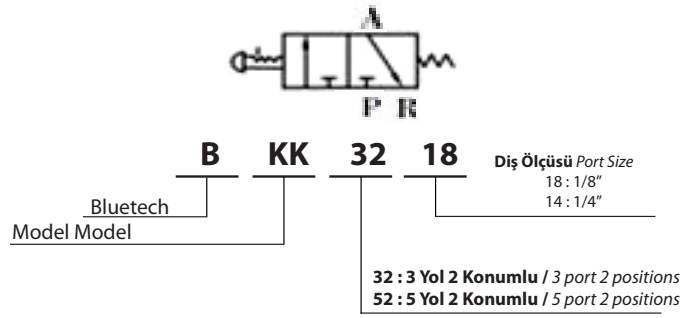


## BMS-R Reset Butonlu Valfler Reset Button Valves



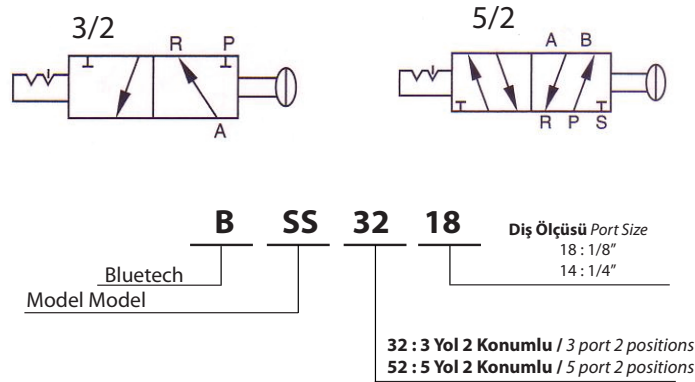
Model Model	BMS 3218	BMS 3214	BMS 5214	BMS 5214 - R
Delik Ölçüsü / Port Size	in:1/8" out:1/8" exhaust: 1/8"	in:1/4" out:1/4" exhaust:1/4"	in:1/4" out:1/4" exhaust:1/8"	
Valf Tipi / Valve Type	3 Yol 2 Konumlu 3 port 2 position		5 Yol 2 Konumlu 5 port 2 position	
Akışkan / Fluid	40 µ Filtreli Hava / 40 µ Filtered Air			
Orifis Çapı / Orifice Size	12 mm <sup>2</sup> CV=0,67	16 mm <sup>2</sup> CV=0,89	16 mm <sup>2</sup> CV=0,89	
Sıcaklık (°C) Temperature	0 ~ 60			
Çalış. Bas. (bar) Operating Press.	0-8			

## BKK Anahtar Konumlu Valfler / Key Position Valves ( 3 position selector )



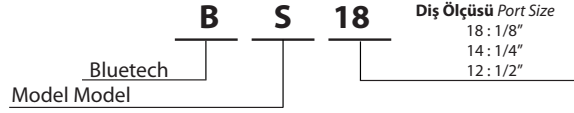
Model Model	BKK 3218	BKK 3214	BKK 5214
Delik Ölçüsü / Port Size	in:1/8" out:1/8" exhaust: 1/8"	in:1/4" out:1/4" exhaust:1/4"	in:1/4" out:1/4" exhaust:1/8"
Valf Tipi / Valve Type	3 Yol 2 Konumlu 3 port 2 position		5 Yol 2 Konumlu 5 port 2 position
Akışkan / Fluid	40 µ Filtreli Hava / 40 µ Filtered Air		
Orifis Çapı / Orifice Size	12 mm <sup>2</sup> CV=0,67	16 mm <sup>2</sup> CV=0,89	16 mm <sup>2</sup> CV=0,89
Sıcaklık (°C) Temperature	0 ~ 60		
Çalış. Bas. (bar) Operating Press.	0-8		

## BSS Sürgü-Sürgü Valfler / Push-Pull Knob Operated Valves



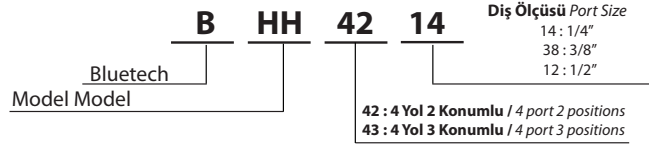
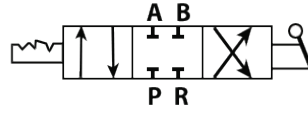
Model Model	BSS 3218	BSS 3214	BSS 5214
Delik Ölçüsü / Port Size	in:1/8" out:1/8" exhaust: 1/8"	in:1/4" out:1/4" exhaust:1/4"	in:1/4" out:1/4" exhaust:1/8"
Valf Tipi / Valve Type	3 Yol 2 Konumlu 3 port 2 position		5 Yol 2 Konumlu 5 port 2 position
Akışkan / Fluid	40 µ Filtreli Hava / 40 µ Filtered Air		
Orifis Çapı / Orifice Size	14 mm <sup>2</sup> CV=0,78	16 mm <sup>2</sup> CV=0,89	16 mm <sup>2</sup> CV=0,89
Sıcaklık (°C) Temperature	0 ~ 60		
Çalış. Bas. (bar) Operating Press.	0-8		

## BS Kaymalı Valfler / Slide Valves



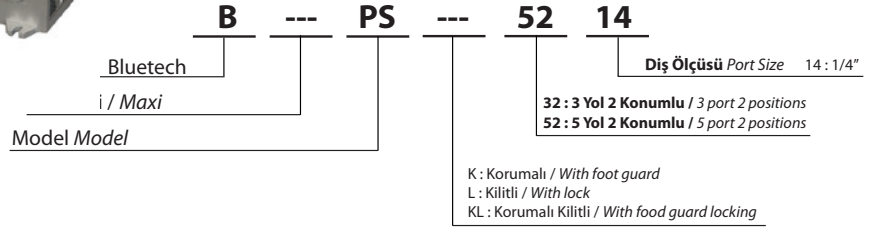
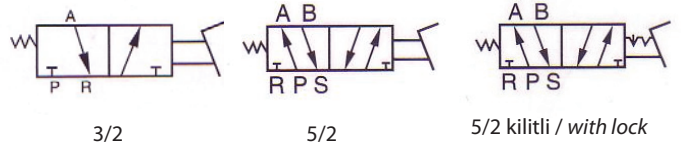
Model Model	BS 18	BS 14	BS 12
Delik Ölçüsü / Port Size	1/8"	1/4"	1/2"
Akışkan / Fluid	40 µ Filtreli Hava / 40 µ Filtered Air		
Sıcaklık (°C) Temperature	0 ~ 60		
Çalış. Bas. (bar) Operating Press.	0-10		

## BHH El Kumandalı Valfler / Hand Operated Valves



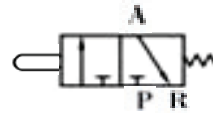
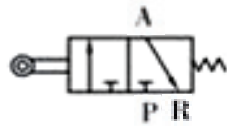
Model Model	BHH 4214	BHH 4238	BHH 4212	BHH 4314	BHHM 4338	BHH 4312
Delik Ölçüsü / Port Size	1/4"	3/8"	1/2"	1/4"	3/8"	1/2"
Valf Tipi / Valve Type	4 yol 2 konumlu 4 port 2 position			4 yol 3 konumlu 4 port 3 position		
Akışkan / Fluid	40 µ Filtreli Hava / 40 µ Filtered Air					
Orifis Çapı / Orifice Size	30 mm <sup>2</sup> (CV = 1,68)					
Sıcaklık (°C) Temperature	0 ~ 60					
Çalış. Bas. (bar) Operating Press.	0 - 8					

## BPS Pedal Valfler / Foot Operated Pedal Valves



Model Model	BPS 3214	BPS 5214	BMPS 5214	BMPSL 5214	BMPSK 5214	BMPSKL 5214
Delik Ölçüsü / Port Size	in:1/4" out:1/4" exhaust: 1/8"		in:1/4" out:1/4" exhaust:1/4"			
Valf Tipi / Valve Type	3 yol 2 konumlu 3 port 2 position		5 yol 2 konumlu 5 port 2 position			
Akışkan / Fluid	40 µ Filtreli Hava / 40 µ Filtered Air					
Orifis Çapı / Orifice Size	Direkt Etkili Direct Acting					
Sıcaklık (°C) Temperature	0 ~ 60					
Çalış. Bas. (bar) Operating Press.	0 - 8					

## BRS Makara-Yay Valfler / Roller Operated Valves



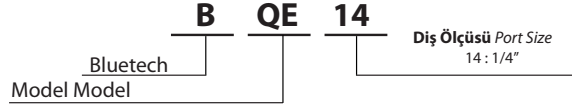
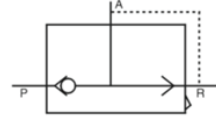
## BTS Pim -Yay Valfler / Plunger Operated Valves



Model Model	BRS 3218	BRS 3214	BRS 5214	BTS 3214
Delik Ölçüsü / Port Size	in:1/8" out:1/8" exhaust: 1/8"	in:1/4" out:1/4" exhaust:1/4"	in:1/4" out:1/4" ex- haust:1/8"	in:1/4" out:1/4" ex- haust:1/4"
Valf Tipi / Valve Type	3 yol 2 konumlu 3 port 2 position		5 yol 2 konumlu port 2 position	3 yol 2 konumlu port 2 position
Akışkan / Fluid	40 µ Filtreli Hava 40 µ Filtered Air			
Orifis Çapı / Orifice Size	12 mm <sup>2</sup> CV=0,67	16 mm <sup>2</sup> CV=0,89		
Sıcaklık (°C) Temperature	0 ~ 60			
Çalış. Bas. (bar) Operating Press.	0 - 8			

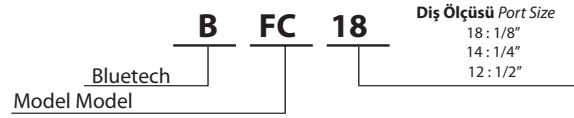
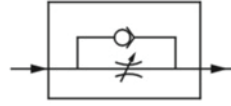


## BQE Çabuk Egzos Valfi / Quick Exhaust Valves



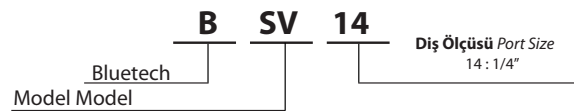
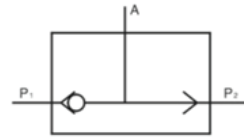
Model Model	BQE 14
Delik Ölçüsü / Port Size	in:1/4" out:1/4" exhaust:3/8"
Orifis Çapı / Orifice Size	27,5 mm <sup>2</sup>
Akışkan / Fluid	Hava Air
Çalışma Şekli / Operating Type	Direkt Etkili Direct Acting
Sıcaklık (°C) Temperature	0 ~ 60
Çalış. Bas. (bar) Operating Press.	0 ~ 10

## BFC Hat Tipi Kısıcı / Unidirectional Flow Control Valves



Model Model	BFC 18	BFC 14	BFC 12
Delik Ölçüsü / Port Size	1/8"	1/4"	1/2"
Akışkan / Fluid	Hava Air		
Sıcaklık (°C) Temperature	0 ~ 60		
Çalış. Bas. (bar) Operating Press.	0 ~ 10		

## BSV Veya Valfi / Logical Valves



Model Model	BSV 14
Delik Ölçüsü / Port Size	1/4"
Akışkan / Fluid	Hava Air
Orifis Çapı / Orifice Size	21 mm <sup>2</sup>
Sıcaklık (°C) Temperature	0 ~ 60
Çalış. Bas. (bar) Operating Press.	0 ~ 10





## BSV Veya Valfi / Logical Valves



BRSNC32Q4IM



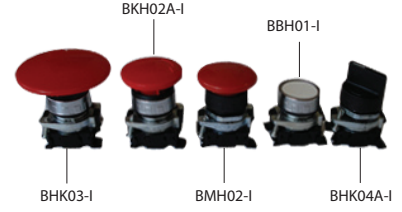
BRSNC32M5IM



BRSNC32Q4IM



BTS32M5IM



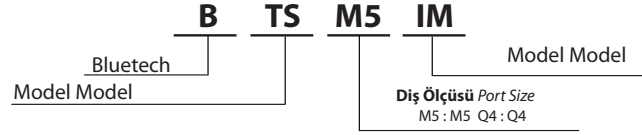
BKH02A-I

BKH02A-I

BMH02-I

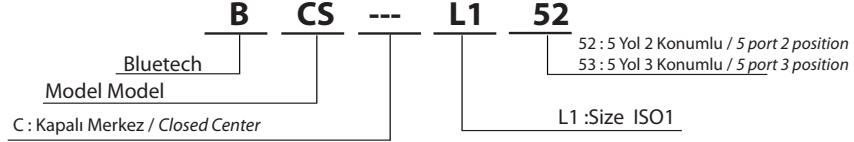
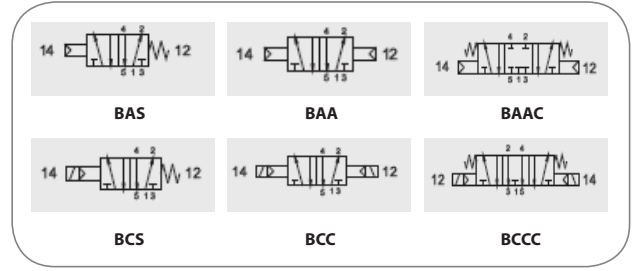
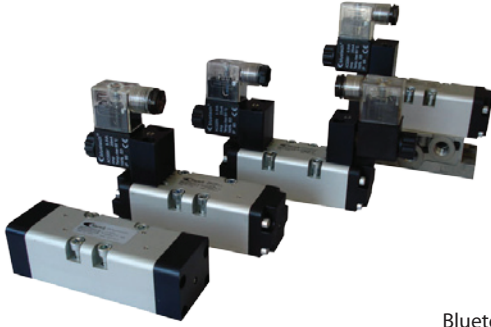
BBH01-I

BHK04A-I



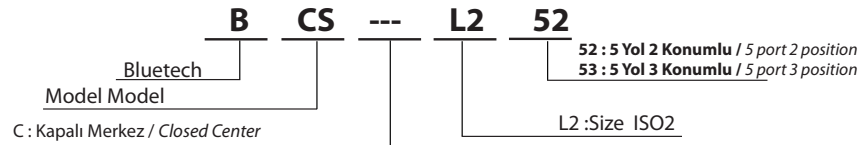
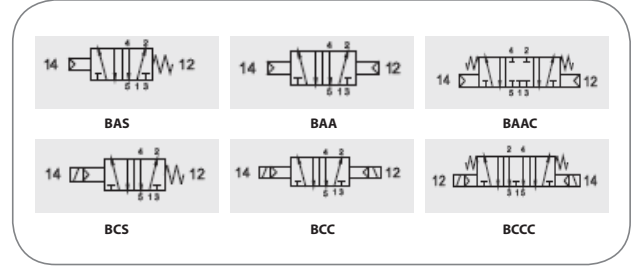
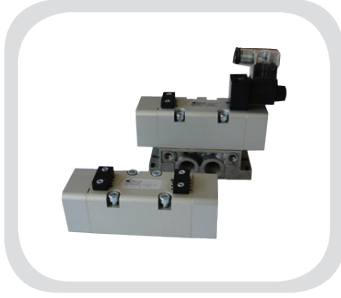
Model Model	BSV 14
Delik Ölçüsü / Port Size	1/4"
Akışkan / Fluid	Hava Air
Orifis Çapı / Orifice Size	21 mm <sup>2</sup>
Sıcaklık (°C) Temperature	0 ~ 60
Çalış. Bas. (bar) Operating Press.	0 ~ 10

## ISO1 Yön Kontrol Valfleri / ISO1 Directional Control Valves



Model Model	BCS1152	BCC1152	BAS1152	BAA1152	BCCCI153	BAAC1153
Pleyt Delik Ölçüsü / Pleyt Port Size	in:3/8" out:3/8" exhaust:1/8"					
Valf Tipi / Valve Type	5 yol 2 konumlu 5 port 2 position			5 yol 3 konumlu 5 port 3 position		
Standart / Standard	ISO 1					
Orifis Çapı / Orifice Size	7,5 mm					
Akışkan / Fluid	Yağlanmış Hava Lubricated Air					
Geçirgenlik NI/min / Flow Rated	1100					
Sıcaklık (°C) / Temperature	-10 ~ 60					
Çalış. Bas. (bar) Operating Press.	2,5 ~ 10					

## ISO2 Yön Kontrol Valfleri / ISO2 Directional Control Valves



Model Model	BCS1152	BCC1152	BAS1152	BAA1152	BCCCI153	BAAC1153
Pleyt Delik Ölçüsü / Pleyt Port Size	in:1/2" out:1/2" exhaust:1/8"					
Valf Tipi / Valve Type	5 yol 2 konumlu 5 port 2 position			5 yol 3 konumlu 5 port 3 position		
Standart / Standard	ISO 2					
Orifis Çapı / Orifice Size	9 mm					
Akışkan / Fluid	Yağlanmış Hava / Lubricated Air					
Geçirgenlik NI/min / Flow Rated	2700					
Sıcaklık (°C) / Temperature	-10 ~ 60					
Çalış. Bas. (bar) Operating Press.	2,5 ~ 10					